

IN THE LOOP

Whole school development bulletin



Dear Parents,

Welcome to our whole school development bulletin. The purpose of this half termly bulletin is to update you on the plans and their progress across our Prep & Senior schools.

Part of my commitment and vision is to ensure our pupils are future-ready and that those skills are developed from nursery right through to Sixth Form.

In the last quarter of a century, the world has changed significantly, whilst the curriculum at GCSE and A Level has not altered very much. In a world where AI is significantly prominent, it strikes me that it is more important than ever to make sure we nurture those skills that make us uniquely human. Skills and behaviours that we will develop inside and outside the classroom to set our children up to thrive in the world beyond school.

The school development plans include improved facilities that can nurture and harness skills such as creativity, collaboration and digital literacy in our children. We are after all preparing them for a different world from the one we ourselves experienced at their age.

I hope you enjoy reading about the plans we have and the updates on progress over the coming months.

As always, I welcome your feedback and please do feel free to get in touch.

Pippa Smithson

IN THIS ISSUE...

UPDATE FROM OUR HEAD,
MRS SMITHSON

SENIOR SCHOOL
DEVELOPMENTS

PREP SCHOOL
DEVELOPMENTS

GET IN TOUCH

Senior School Development



Every pupil in Year 7-11 will have a Surface Go device from September.

Launch of our new Creativity & Innovation Hub.

Consultation with planning experts about transport solutions.

Plans for Science Labs to be re-furbished.

Engaging planning consultants for a multi-purpose sports surface.



Creativity & Innovation Hub

What...

This will be a space in Kilmorey consisting of:

- An editing suite
- A green screen room
- A recording studio

Why...

In-line with our future-ready vision this new space and equipment will allow pupils to create podcasts, short films and YouTube channels in different areas of interest. They will develop skills to create engaging content across a range of media as part of their future-ready curriculum.

When...

Work has already begun and expect to launch in September 2021.





Digital Roll-out

What...

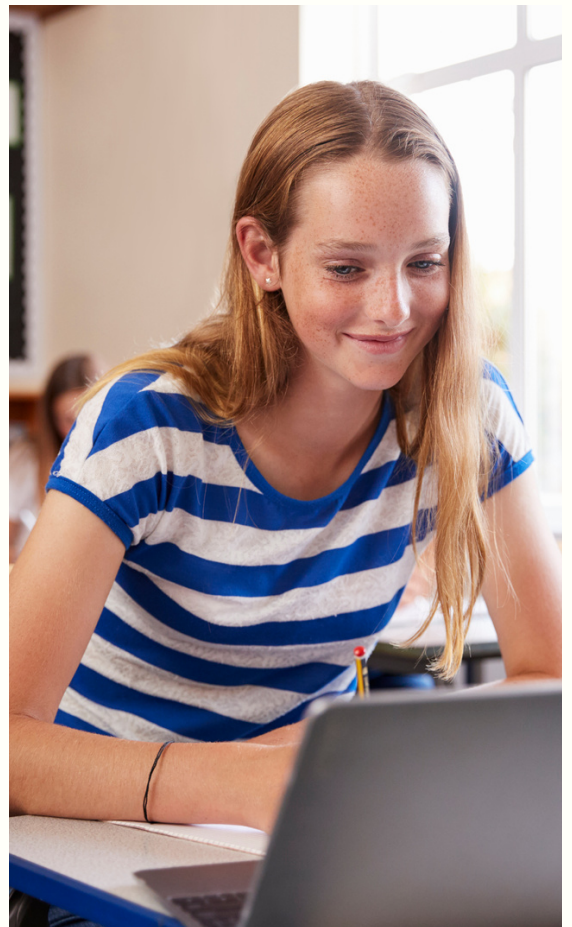
Pupils in years 7,8,9,10 and 11 will have their own device, a Surface Go. Sixth form pupils will be encouraged to bring in their own devices. Teachers already have a Surface Go and new interactive screens will be installed across the school.

Why...

To ensure our pupils are future-ready; digitally literate and savvy. Days of carrying round heavy text books will be a thing of the past. Instead, pupils will have a Surface Go which will allow for an interactive workflow and a modern approach to learning.

When...

September 2021.





Science Labs

What...

Two science labs will be re-furbished to create modern, bright and well equipped learning environment.

Why...

These new spaces will be designed to encourage scientific exploration and experiment.

When...

We are currently investigating how quickly we can complete this project and will update you in the next issue of our school development bulletin 'In the Loop'.





All Weather Sports Pitch

What...

An all weather sports facility.

Why...

We will add Hockey to our sports offering at The Royal for girls and boys. The designated area will allow for friendly and competitive fixtures, lunchtime and after school team practices. Sport is key to wellbeing, fitness and good health, as well as allowing pupils to have fun all year round on a state of the art facility.

When...

We have had an initial quote and next steps are to secure planning permission for this new exciting and essential facility.





Access & Transport

What...

We value our beautiful site but recognise that access and efficient transport up the lane will be key in recognising our vision of growth for the school.

Why...

We want to reduce traffic movements up the lane while increasing numbers of pupils at the school. We want to make this as easy as possible, not only for our pupils and parents but also to ease traffic flow for our neighbours on the Lane.

When...

We are currently consulting with planners to find a workable solution.



Prep School Development



**Digital mobile devices for every child
Reception to Prep 6.**

**Robotics as part of the curriculum
Prep 3 - 6.**

**A new baby Grand Piano for all pupils
and a class group set of Ukuleles.**

**Enhanced Drama Performance space in
Lacey Hall.**

**A new Kitchen Garden Cookhouse where
children prepare, cook and learn about
food.**



Enhanced Music Provision

What...

The music department will benefit from a new baby Grand Piano for all pupils and a class group set of Ukuleles.

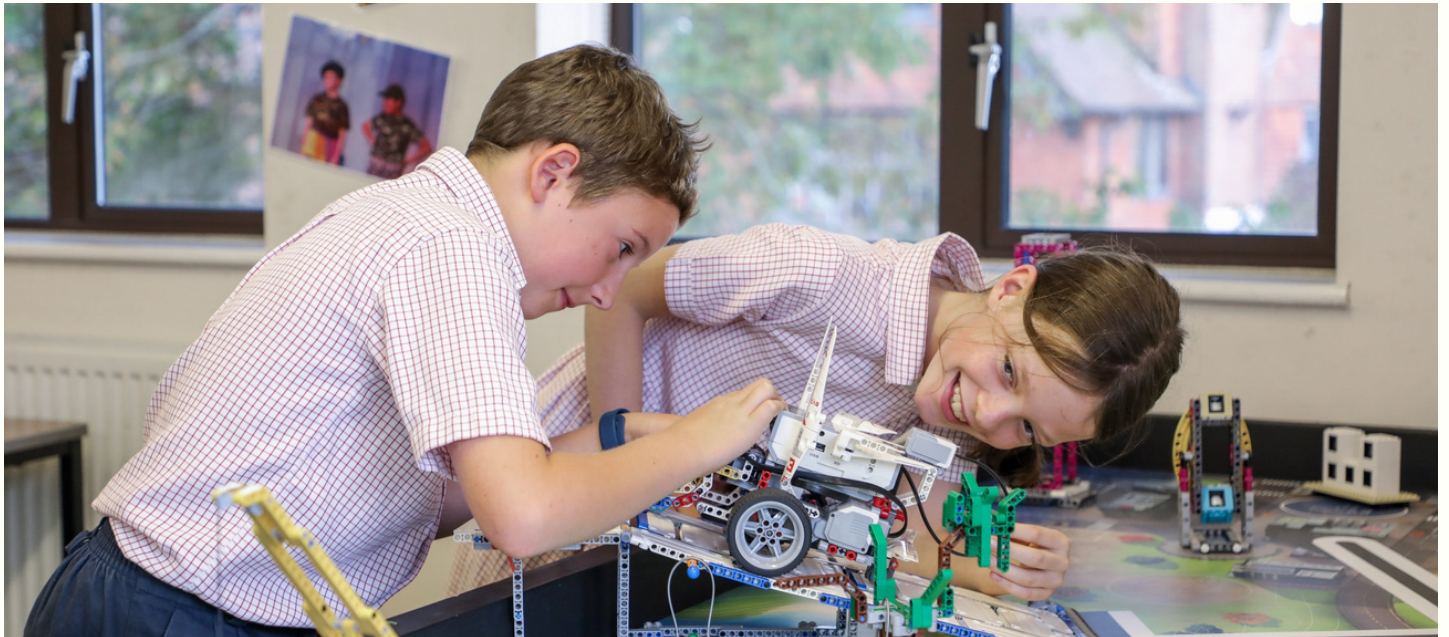
Why...

Around 60% of our pupils choose to learn an individual instrument. All children in Reception – Prep 2 will be given the opportunity to learn to play an instrument as part of the curriculum and the Ukulele is a perfect starting instrument for little hands! Aspiring pianists will be able to perform on our new baby Grand Piano.

When...

September 2021.





Robotics in the Curriculum

What...

More robotics kits are coming to The Royal.

Why...

Incorporating robotics into the curriculum exposes pupils to problem solving and coding. It teaches children how to be nimble in their thinking and develop their ability of turning the 'impossible' into 'possible'.

When...

September 2021.





Digital Mobile Devices

What...

As part of our digital strategy, every child will be provided with their own mobile device. Reception to Prep 2 children will have iPads and Prep 3 – Prep 6 will have a Surface Go.

Why...

Pre-Prep children will use Apps on the touch-screen iPads to enhance their learning across the curriculum. These include letter formation, phonics games, interactive exploration of the world, digital artwork and creating drama and story scenes. Microsoft Surface Go will be rolled out across the rest of the Prep School. Pupils will develop the ability to work creatively, independently and collaboratively.

When...

During the course of the next academic year.





Enhanced Drama Performance Space

What...

Retractable seating and performance space blackout curtains will be installed in Lacey Hall.

Why...

Performance develops confidence in children. An enhanced drama performance space will enable pupils to take part in music concerts, drama productions, class assemblies, House debates, poetry recitals and story slams. The development of Lacey Hall will enhance both the experience of the performer and spectator.

When...

During the course of the next academic year.





A New Cookhouse

What...

A kitchen garden cookhouse where children prepare, cook and learn about food.

Why...

Food and nutrition have an impact on physical, mental and emotional wellbeing. This new facility will enhance their understanding of sustainability, health and nutrition.

When...

We are obtaining quotes for this and will update you in the next issue of our school development bulletin 'In the Loop'.





Any Questions?

As always, we welcome your feedback, please do feel free to get in touch.



+44 (0)1428 605805



head@royal.surrey.sch.uk



www.royal-school.org



www.facebook.com/theroyalschool



www.instagram.com/the_royal_school_surrey/



twitter.com/The_RoyalSchool



Mrs P Smithson, Head



Mrs K Daunter, Head of Prep